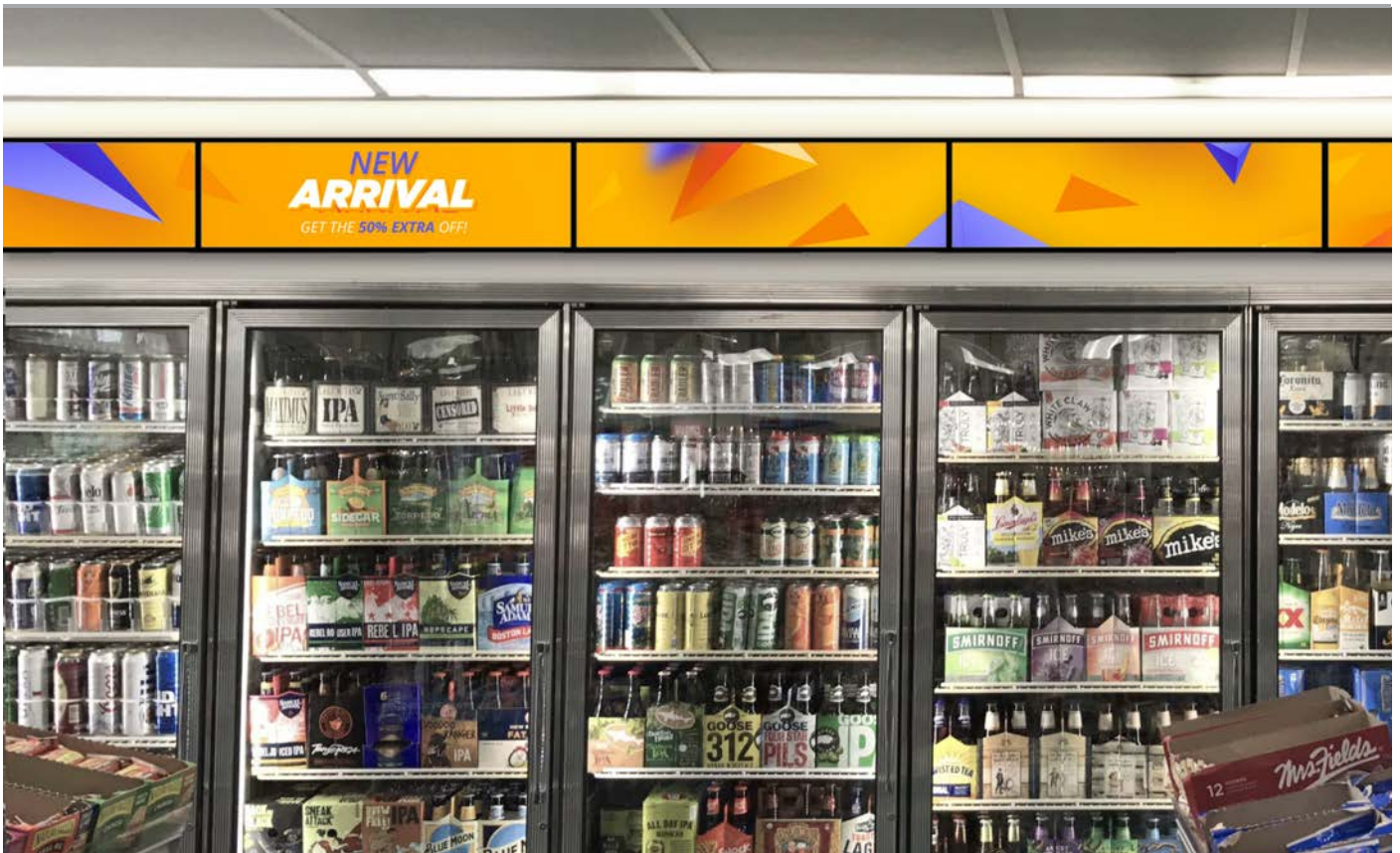


# 37" Ultra-Wide Stretched Bar Displays



Perfect as a banner-style endcap display in retail stores and supermarkets

## Ultra-Wide Aspect Ratio

The unique stretched aspect ratio of these displays really make them stand out from the crowd. As well as being the perfect banner to create vibrant and animated end-aisle displays they can also be used singularly to make a huge impact.

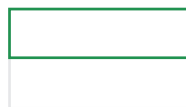


## Clear High Definition Image

Unlike LED stretched displays this solution uses a full HD LCD panel to provide a clear image. This is high resolution is essential to be able to read text at close proximity and also produce the best results when showing video.



**1920x540**  
RESOLUTION



Synchronise Multiple Displays



24/7 Commercial Grade



Android Media Player



IPS Panel



Free Flush Fit Mounting Plate



Multiple Media Zones



Update Online/Plug and Play



Software Packages Available



Other Sizes Available



3 Year Warranty

## Other Features

### Synchronise Multiple Displays

These screens can display content independently from one another or they can be grouped together to create an eye catching synchronised end cap.



### 24/7 Commercial Grade

As they are designed for supermarkets and other retail spaces these screens are commercially graded to run constantly 24/7.



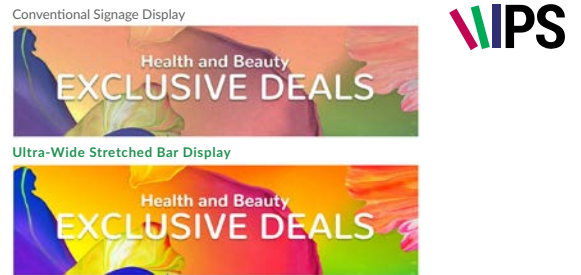
### Android Media Player

They feature an integrated Android media player which can be updated via USB or using our online CMS. You can also install third party software if required.



### IPS Panel

As well as having a vivid brightness of 300cd/m<sup>2</sup> the commercial IPS panel accurately displays image quality and colour depth at a 178° ultra wide viewing angle without fall-off in colour accuracy.



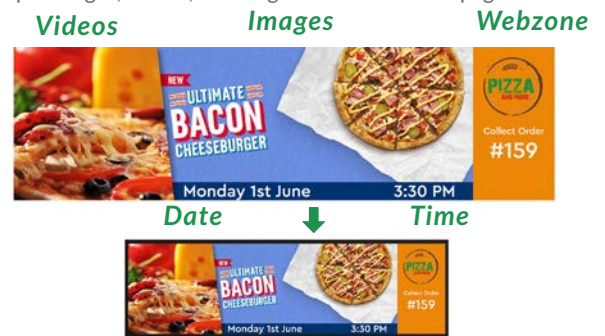
### Update Online

With a simple network upgrade these displays can be updated and managed remotely using our online CMS portal.



### Multiple Media Zones

The screen can be sectioned off into different zones to display multiple images, videos, scrolling text and even webpages.



### Plug and Play

For a simple update method these screens can be updated by simply copying your images and videos onto a USB stick and inserting this into the display. Once the files have automatically copied over the USB stick can then be removed.



### Software Packages Available

If your requirements are more advanced we have specialised software packages available on request.





# Key Features



ULTRA-WIDE ASPECT RATIO



24/7 COMMERCIAL GRADE



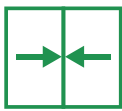
ANDROID MEDIA PLAYER

# VIPS

IPS PANEL



NARROW BEZEL



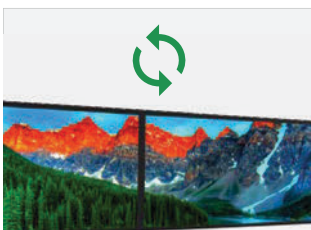
MULTIPLE MEDIA ZONES



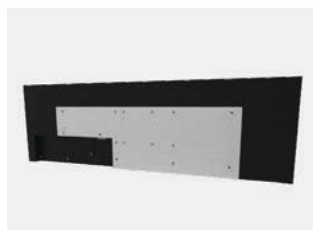
PLUG AND PLAY



NETWORK UPGRADE



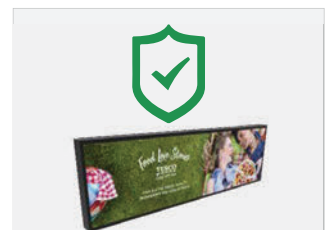
SYNCHRONISE MULTIPLE DISPLAYS



FREE FLUSH FIT MOUNTING PLATE



COMPACT DESIGN



3 YEAR WARRANTY

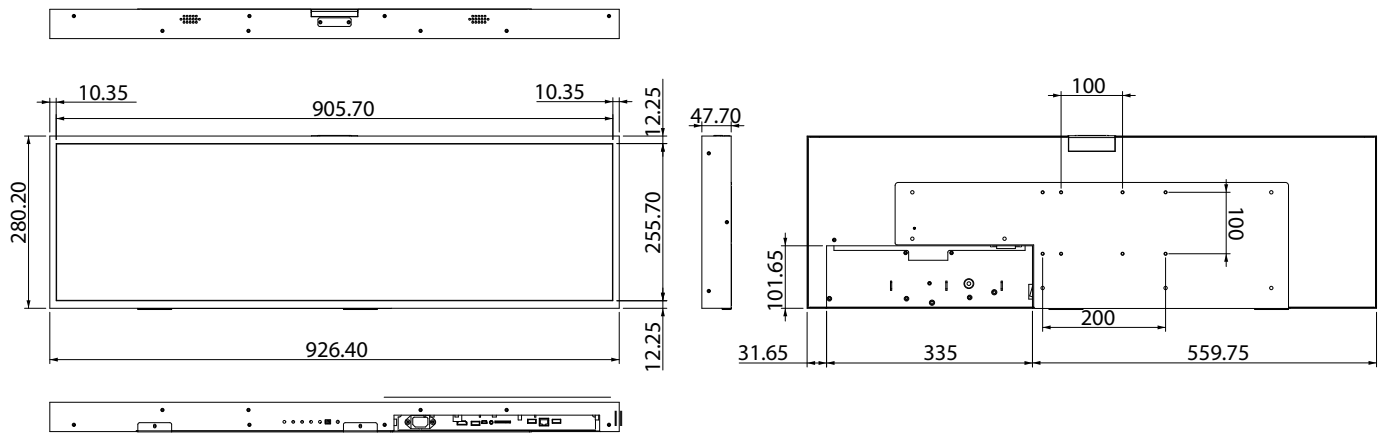
## Specification Table

		37 Inch
Panel	Resolution	1920x540
	Display Area (mm)	905.7x255.7
	Aspect Ratio	32:9
	Brightness (cd/m <sup>2</sup> )	700
	Colour	16.7M
	Viewing Angle	89°
	Contrast Ratio	4000:1
AV Inputs	Video	HDMI, VGA
	Audio	Audio Socket (3.5mm)
Power	Power Consumption (W)	35
	Input Voltage	DC 12V
Mechanical	Unit Size (WxHxD mm)	926.4x280.2x47.7
	Package Size (WxHxD mm)	TBC
	VESA Holes (mm)	100x100, 130x100, 170x100, 200x100
	Net Weight (Kg)	TBC
	Gross Weight (Kg)	TBC
Environmental	Operating Temperature	0°C to 40°C
	Storage Temperature	-10°C to 60°C
	Operating Humidity	10% to 85%
	Storage Humidity	5% to 95%
Computer	Media Formats	Video (MPG, AVI, MP4, RM, RMVB, TS), Audio (MP3, WMA), Image (JPG, GIF, BMP, PNG)
	Media Resolution	1920x540
	Internal Memory	6GB
	CPU	Quad-Core Cortex-A17@1.61GHz
	GPU	Mali-T760 MP4 @600MHz
	RAM	2GB DDR3
	Internal Storage	8GB NAND
	USB	USB2.0 HOST (x2)
	LAN	10/100M Ethernet (Network Version Only)
	Wi-Fi	802.11b/g/n/ac (Network Version Only)
	OS	Android 5.1.1
	Graphic Engine	OpenGL ES 1.1/2.0/3.0/3.1, OpenCL 1.1, Renderscript, Direct3D 11.1
	Accessories	Included
Optional		Network Upgrade, Wall Mount, Floor Stand/Trolley, Ceiling Mount, Table Stand
Warranty	Warranty Period	3 Year Warranty
	Technical Support	Lifetime



# Technical Drawing

---



## Why Choose Our Commercial Display Solutions?



### Lifetime Technical Support

From the moment you receive your product, throughout the duration of your warranty and even after your warranty has expired we are here to support you. If you require any assistance setting up or using your product, or have any problems at all, we can provide free technical support via telephone and email.



### On-site Support and Maintenance\*

If needed, we can provide an installation service for any of our products. We can also set up service-level agreements for larger projects that require maintenance contracts.



### Extended Warranty\*

All of our commercial display products come with a 3 year commercial warranty as standard but if you want to extend this you can upgrade this to cover a 5 year period at point of purchase.



### Training

As well as providing free remote CMS training sessions and webinars we can also visit you to deliver bespoke training for our software and hardware\*.



### Advanced Replacements†

Should your display suffer from any kind of hardware failure during the warranty period we will send you an advanced replacement and arrange for your old display to be collected, free of charge. This ensures no downtime where you are without a screen.



### Custom Product Testing & Configuration

If you need us to test third party software or a website, or configure your screen in a particular way before it is dispatched (e.g. in a particular orientation or network mode), we can do so to make your life easier.



### 3D Rendering

Want to know how a particular screen will look once installed? Send us a photo of the location and we will create a 3D rendering of any screen in situ to help you to visualise how amazing it will look.



### Logistics Support

We hold more stock in our UK warehouse than any other manufacturer so we can help you meet tight deadlines. For last minute orders we can also offer special express or morning delivery options\*. We also carry out UK based quality control checks on every display before it leaves our warehouse.



### Project Support

If you need to loan a sample unit to test we'd be more than happy to arrange this. We can also provide a rental service for temporary projects\*.



### Customisation\*

Your display can be customised to suit your requirements by adding your logo or printed graphics or even tailoring the colour of a display. We can also carry out hardware modifications to existing products or manufacture bespoke solutions for special projects.



### Extras\*

As well as being able to provide accessories and add-ons, such as extra remote controls, NUC PCs and video wall controllers, we can also supply custom made flight cases which are great if a display needs to be moved safely from place to place.

†UK mainland only

\*These particular services may incur additional charges